



National Kaohsiung
CENTER_{FOR THE}ARTs

WEI WU YING

衛武營 國家藝術文化中心

國家表演藝術中心 National Performing Arts Center

RECITAL HALL

Technical Information

Table of Contents

1 General Information	1
1-1 National Kaohsiung Center for the Arts (WEIWUYING)	1
1-2 Recital Hall	1
1-3 Traffic Information	2
1-4 Contact Information	2
1-5 Stage door	2
1-6 Auditorium / Seating	3
1-7 Plan	5
1-8 Section	6
2 Stage	7
2-1 Stage	7
2-2 Hoisting	8
3 Lighting	9
3-1 Lighting instrument	9
3-2 Accessories	10
3-3 Lighting DMX system	13
3-4 Lighting Circuit	14
3-5 Portable Lift	16
3-6 Additional Power Supply	16
3-7 Working Light / House Light	16
4 Audio/Video Systems	17
4-1 Audio Facilities	17
4-2 Control Room	21
4-3 Stage Manager' s Desk	21
4-4 Microphone	22
4-5 Communications	22
4-6 Locations of Communications	23
4-7 Stage Cameras and Video Surveillance Systems	23
4-8 Paging Systems	24
4-9 Projector	25
5 Backstage Facilities	26
5-1 Dressing Rooms and Green Rooms	26
5-2 Orchestra Facilities	26
5-4 Loading Dock	27
5-5 Other Facilities	29

Last updated : 2025/9/28

1 General Information

1-1 National Kaohsiung Center for the Arts (WEIWUYING)

CENTER FOR THE ARTS, ARTS FOR THE PEOPLE, National Kaohsiung Center for the Arts will become one of the important theatre complexes of the international art field. It includes four performance blocks, the 2,236 seat Opera House, the 1981 seat Concert Hall, the 1210 seat Play House and the 434 seat Recital Hall.



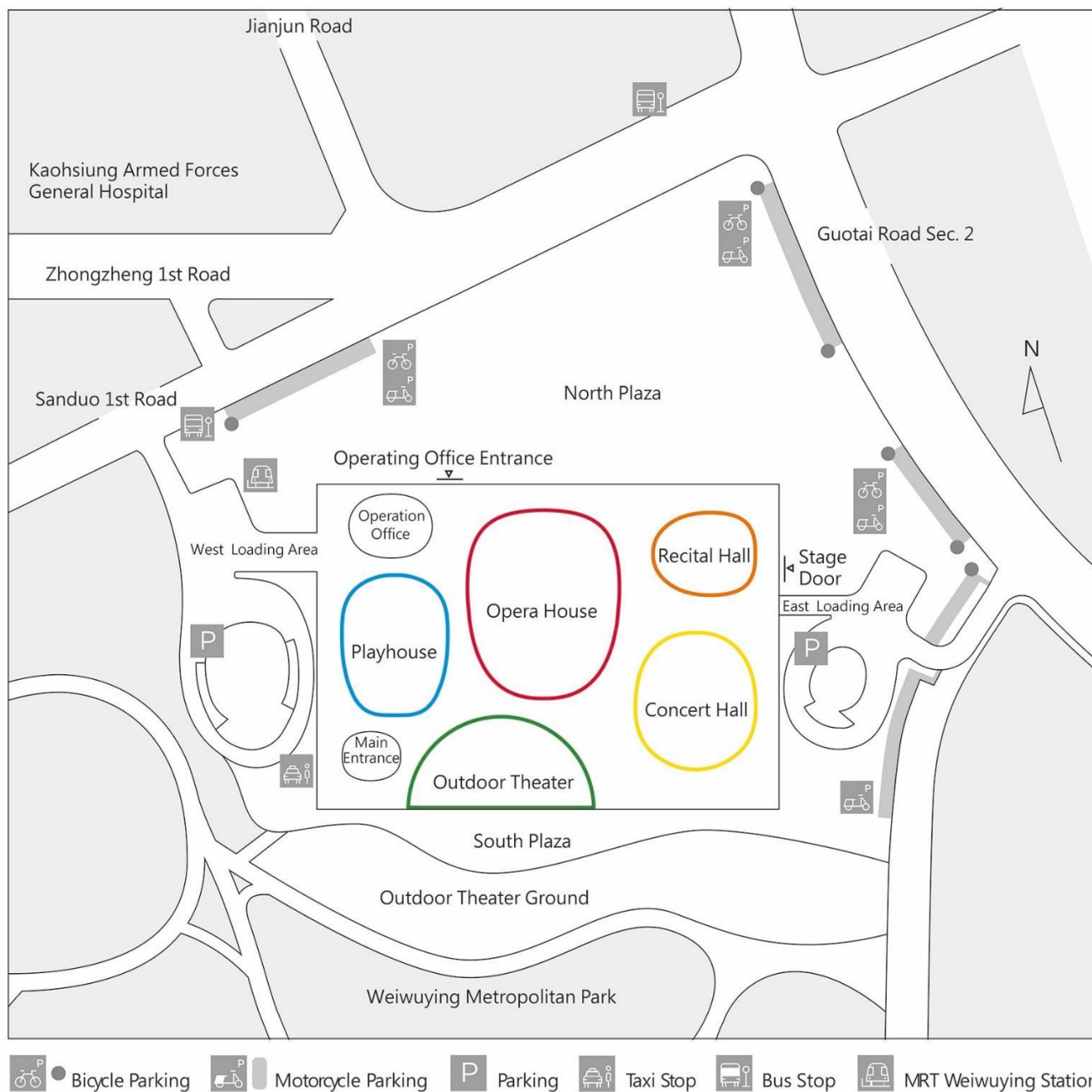
1-2 Recital Hall

The Recital Hall is mainly for chamber music, solo recitals, or other smaller performances. The sound-absorption can be adjusted to meet the needs with diverse types of performances, providing the most optimal acoustic effect.

The design is a variation of the traditional shoebox style, where a short partition wall is erected along the center line of the seating area to convert the Recital Hall into a vibrantly asymmetrical shoebox, while also providing reflection of direct sounds for the front seating area. To meet the needs of various types of performances, the sound-absorption value can be adjusted accordingly in the Recital Hall. An entire circle of sound-absorbing drapery behind the perforated wooden panels surrounds the upper half of the Recital Hall. The size of the drapery used is determined by performance genres so as to offer a superb acoustic effect.



1-3 Traffic Information



National Kaohsiung Center for the Arts (Weiwuying)

No.1, Sanduo 1st Rd., Fengshan Dist.,
Kaohsiung City 83075, Taiwan

+886 7-262-6666

service@npac-weiwuying.org

1-4 Contact Information

1-5 Stage door

Ground floor access is from the north and east side of building. Enter from Operating office entrance on Sanduo 1st Road or Stage Door on Guotai Road.

Basement Level 1 access is from Sanduo 1st Road entrance for Opera House and Playhouse, Guotai Road entrance for Concert Hall and Recital Hall.

Working pass will be required for entry.

1-6 Auditorium / Seating

- Seating Capacity : 434 seats
- House Seats : 407 seats (1F/207 Seats ~ 2F/200 Seats)
 - Wheelchairs Seats : 6 seats
 - Companion Seats : 6 seats
 - Control Area Seats : 8 seats
 - Reserved Seats for Tech Table : 4 seats
 - Reserved Seats for FOH : 3 seats

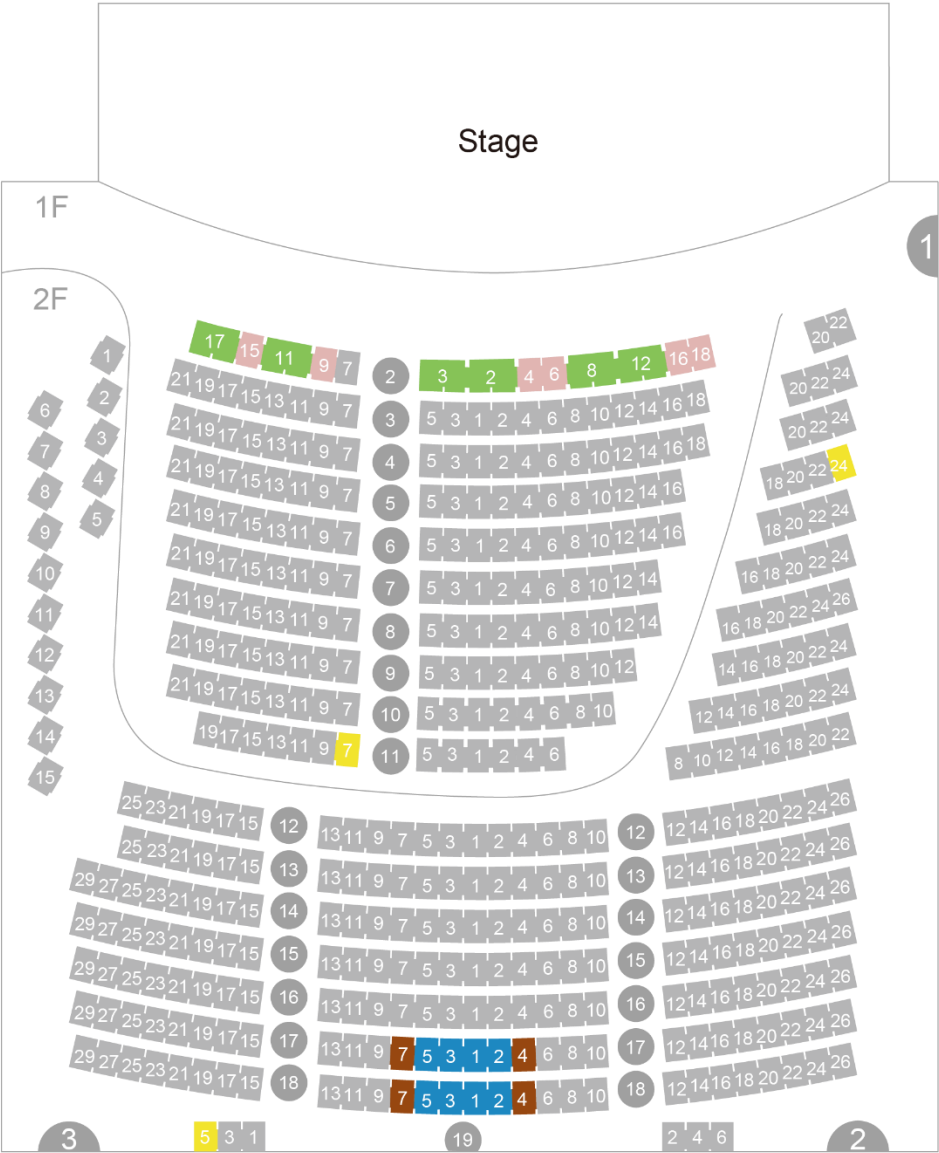


Figure 1.1- Recital Hall Seating plan

Set Up Equipment Recommended Seat

Set Up Equipment Seat	Reserved Seat	Notes
1st Floor 11 Row Seat 1	1st Floor 10 Row Seat 1 1st Floor 11 Row Seat 2 、 3	For Photo Shooting & Video Shooting
2nd Floor 18 Row Seat 1	2nd Floor 17 Row Seat 1 2nd Floor 18 Row Seat 2 、 3	For Photo Shooting & Video Shooting 18 rows of rear walkways need to be kept open
V Row Seat 1	V Row Seat 2 、 3 、 4 、 5 、 6 、 7	For Photo Shooting & Video Shooting
Set Up Control Area Seat	Reserved Seat	Notes
1st Floor 10 Row Seat 1 、 2 、 3 、 5 1st Floor 11 Row Seat 1 、 2 、 3 、 5 2nd Floor 17 Row Seat 1 、 2 、 3 、 5 2nd Floor 18 Row Seat 1 、 2 、 3 、 5	1st Floor 10 Row Seat 4 1st Floor 11 Row Seat 4 2nd Floor 17 Row Seat 4 、 7 2nd Floor 18 Row Seat 4 、 7	18 rows of rear walkways need to be kept open
1st Floor 3 Row Seat22	1st Floor 2 Row Seat20 、 22 1st Floor 3 Row Seat20 、 24 1st Floor 4 Row Seat20 、 22 、 24	Suggested Location for Subtitle Projectors

1-7 Plan

表演廳一樓化妝室位置圖
Recital Hall 1F Dressing Room Map



Figure 1.2- Recital Hall Plan

1-8 Section

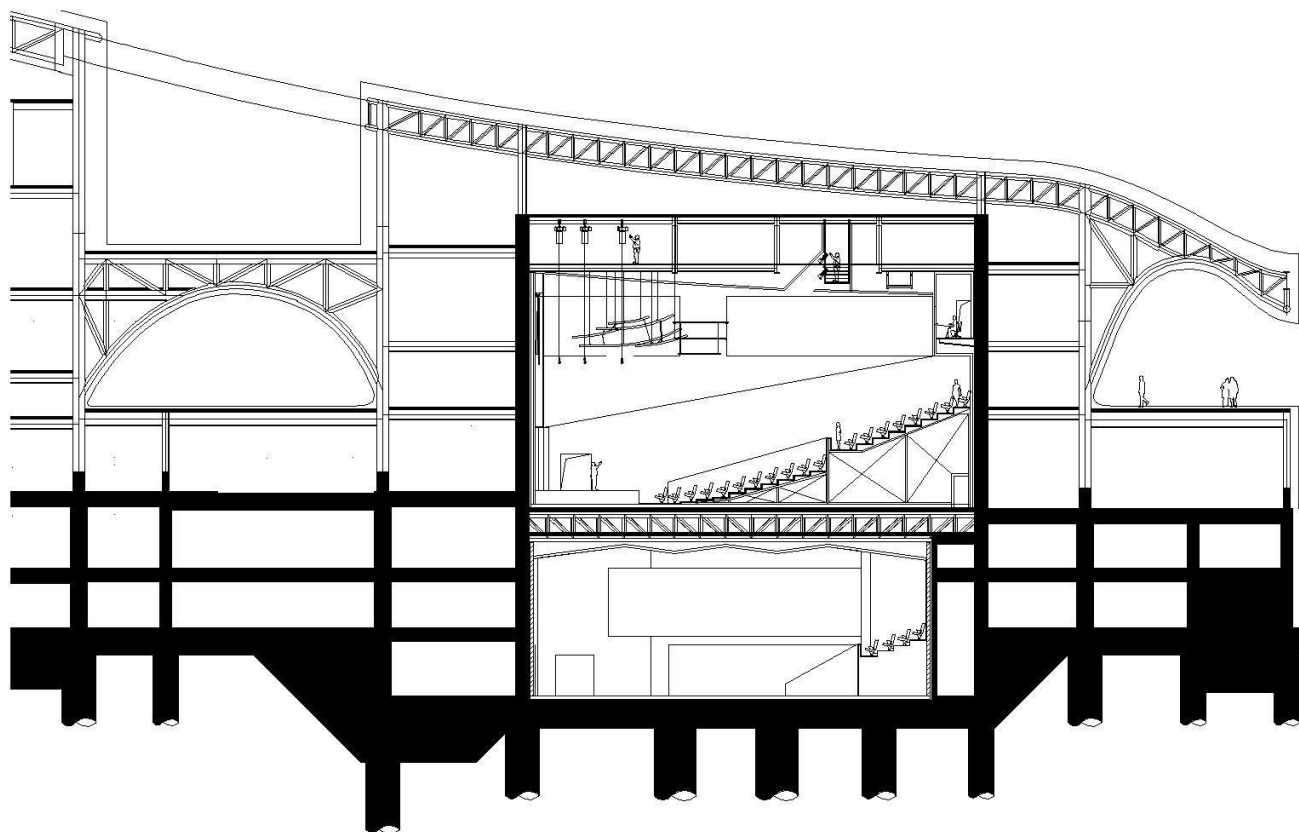


Figure 1.3- Recital Hall Section

2 Stage

2-1 Stage

15.6m (Width) x 5.4m (depth) x 0.7m (height from auditorium floor to stage level)

Sound reflect absorbing drape

Fixed acoustic panel, 8.5m above the stage level

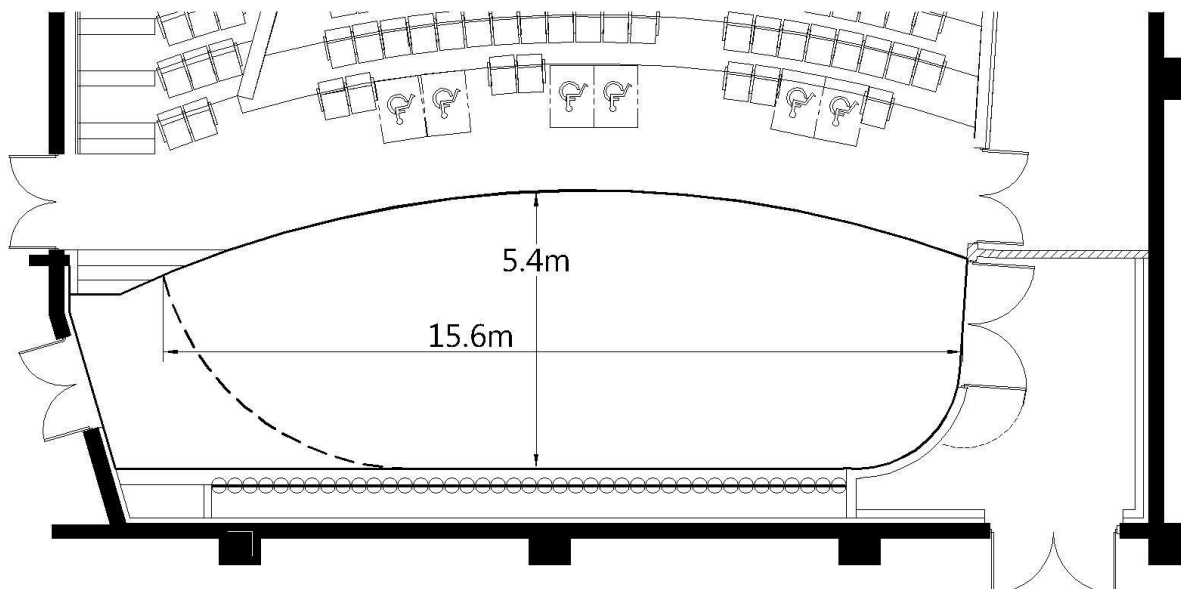


Figure 2.1-Stage Plan

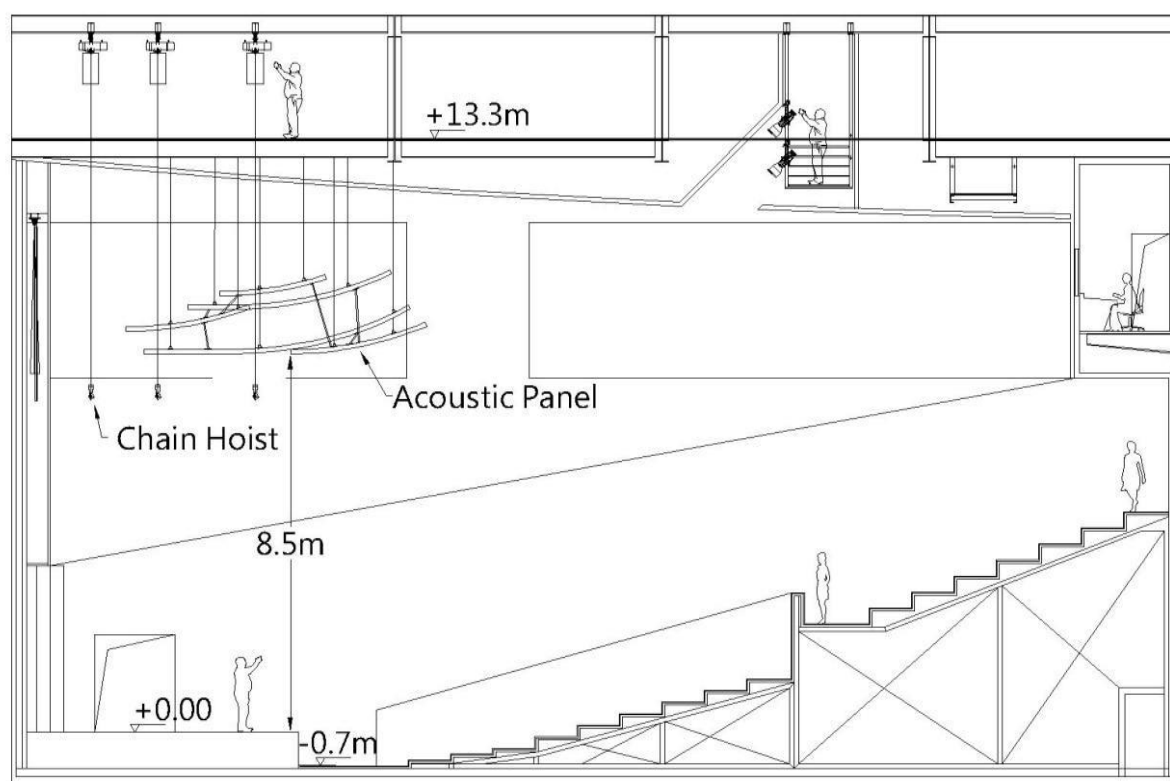


Figure 2.2- Acoustic Panel Plan

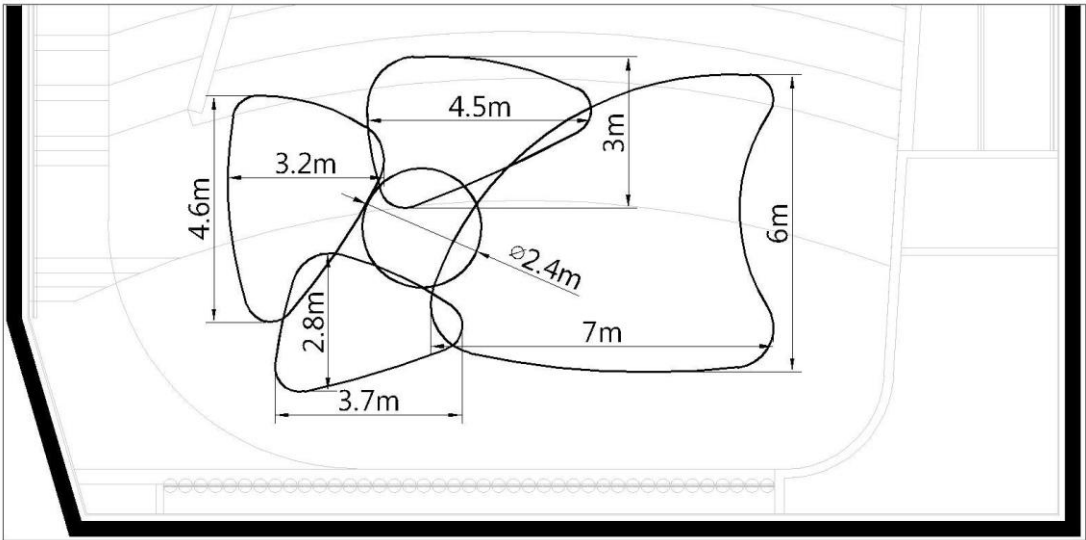


Figure 2.3- Acoustic Panel Plan

2-2 Hoisting

2-2-1 Chain hoist (point load 1000kg, fixed speed: 9.6m/min)

- Above Stage, 9 sets, operation length 15m, Movecat PLUS lite chain hoists.
- ※ Chain hoists 3, 6, and 9 are configured with 10 meters trusses. Please contact the Technical Department if rental is required.
- ※ The maximum truss length for chain hoists 2, 5, and 8 is 12 meters.
- ※ The maximum truss length for chain hoists 1, 4, and 7 is 12 meters.
- ※ The maximum height of chain hoists 4 and 5 is 7.3 meters.

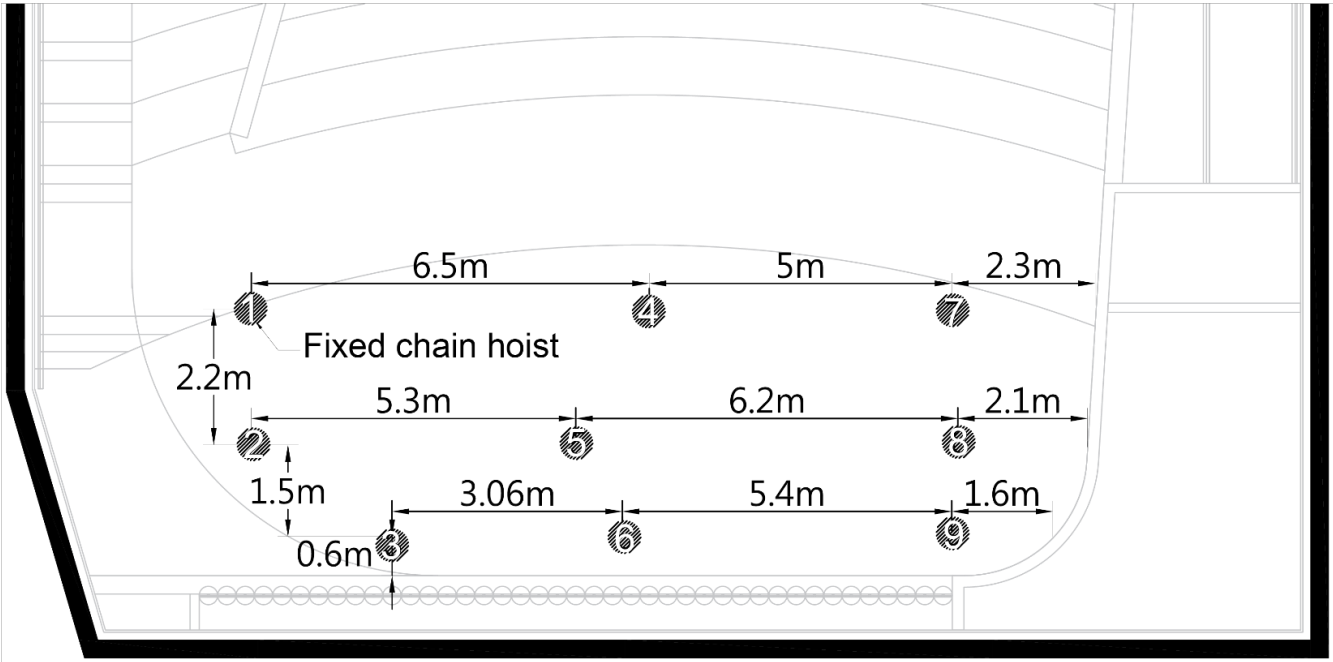


Figure 2.4 - Stage Hoisting plan

2-2-2 Control System

The chain hoists control system is located in the grid area and can be connected to both side of stage, through Movecat MRC ID remote controller operates in the stage area.

2-2-3 Trusses

Item	Quantity	Dimension	Paid item
EUOTRUS HD33 (Triangle)	4	0.29m(equilateral triangle length) x 0.25m(Height) x 4 m(length)	*
	18	0.29m(equilateral triangle length) x 0.25m(Height) x 3 m(length)	*

Items with * mark are paid items. Please refer to the rate tables of National Kaohsiung Center for the Arts.
*Labor for disassembly and assembly not included.

3 Lighting

3-1 Lighting instrument

Item	Position	Model	Specifications	Quantity	Frame size	Note	Paid Item
Lighting Console	Control Booth	GrandMA 2 Ultra Light		1			
Dimmer System	Dimmer Room	State Automation Solution	220V 3kW/Circuit	120ch			
Ellipsoidal Reflector Spotlight	Catwalk	Chauvet Ovation E-26WW IP(14°lens)	100-240V /230W	16	19.1x19.1cm		
		Selecon SPX 15°-35°	220V/800W	8	15.8x15.8cm		
	SR Lighting Box	Selecon SPX 19°	220V/800W	4	15.8x15.8cm		
		Selecon SPX 15°-35°		4			
	SL Lighting Box	Selecon SPX 19°	220V/800W	4	15.8x15.8cm		
		Selecon SPX 15°-35°		4			
	Stage Top Light	ADB Orkis Fresnel Pebble	220V	10			
	Storage	Selecon SPX 14°	220V/800W	6	15.8x15.8cm		
		Selecon SPX 19°		16			
		Selecon SPX 15°-35°		2			
		ETC Source Four 36°	220V/750W	16	15.9x15.9cm		
		ETC Source Four 50°	220V/750W	10			
2KW Fresnel Spotlight 8"		Selecon Arena Theatre 8" Fresnel 7°-60°	220V/2kW	20	24.5x24.5cm		
Parabolic Aluminized Reflector Spotlight		PAR 64-Kupo PL-64LB	220V/1kW	32	25.4x25.4cm	Lamp : W x 8 、 M x 16 、 N x 8	
Follow Spot	Catwalk	Lycian M2 Model 2040 1.2	220V/1.2kW	1			
		Rob T11 Profile	100-240V/420W	2			
Strip Light	Stage	Selecon PL TR2 RGB 18 Striplights	110-220V/ 2.5A-1.3A 280W	1 Set		If manual needed, please contact TC Team.	*
Acoustic Panel Light	Install in the wall	Clay Paky Mini-B WW	100-240V /40W	4			*
Follow Spot Operator			Operator/ 4 hour	1			*

Items with * mark are paid items. Please refer to the rate tables of National Kaohsiung Center for the Arts.

3-2 Accessories

Item	Specifications	Size	Quantity
Barn Door	2kW Fresnel		10
Iris	For Selecon Ellipsoidal Reflector Spotlight		10
Gobo Holder	For Selecon Ellipsoidal Reflector Spotlight	B Size	20
	For ETC Source Four Ellipsoidal Reflector Spotlight	A Size	20
Power Distribution Box	8CIR CEE Form Female Plug		9
Multi-Cable	16pin Multi-Cable Harting Connector	5m	4
		10m	2
		15m	2
Ex-Cable	CEE16A	1.5m	30
		2m	30
		3m	20
		5m	14
		10m	9
		15m	10
Adapter Cable	CEE 16A(M) To Stage-Pin(F)		10

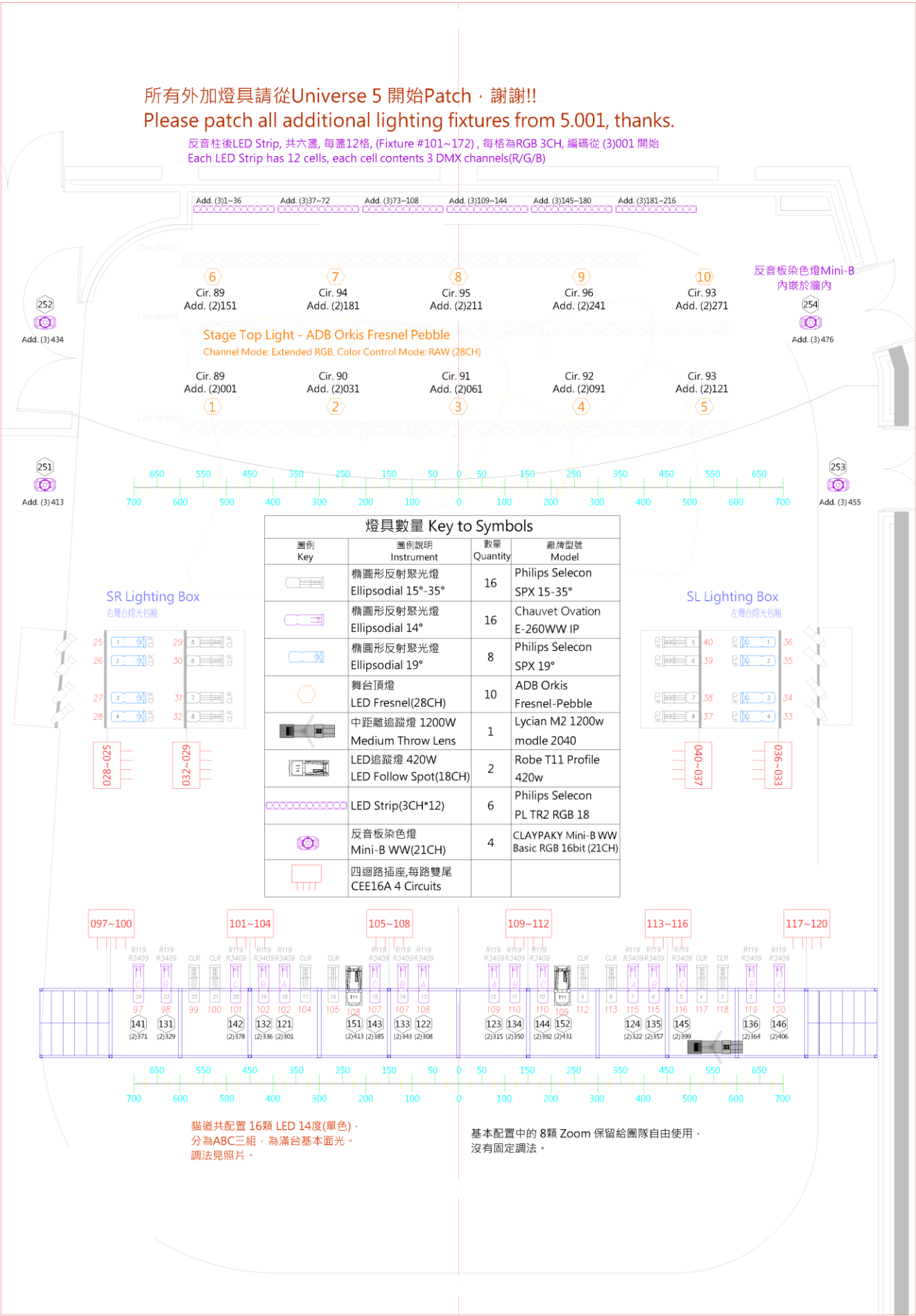


Figure 3.2.1- FOH Lighting Plot

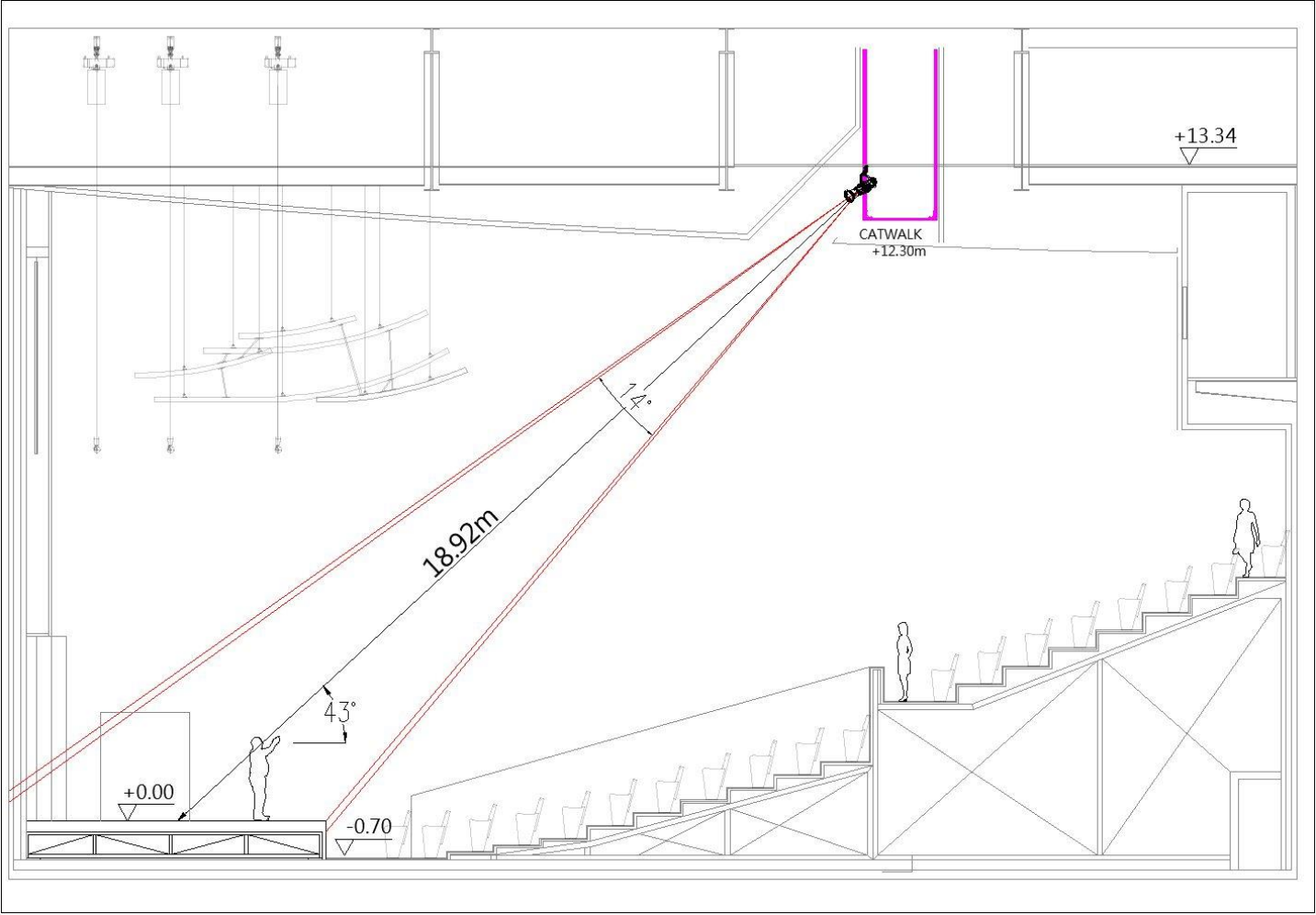


Figure 3.2.2- Lighting Section

3-3 Lighting DMX system

* Please patch all additional fixtures from (5)001,thanks.

Item	Position	Model	Quantity	Note	Paid Item
Node	Grid	MA3 4Port	1		
	Lighting Box L/R	MA2 2Port	1/1		
	Off Left/Off Right	MA2 2Port	1/1		
	UL/UR Stage	MA3 2Port/ MA2 2Port	1/1		
	Portable	MA2 2Port	1		
		MA3 2Port	1		
Isolator	Grid	Chauvet RDMX Splitter8	2	All isolators are 2 in 4 out (default)	
NPU	Control Booth	MA	1		

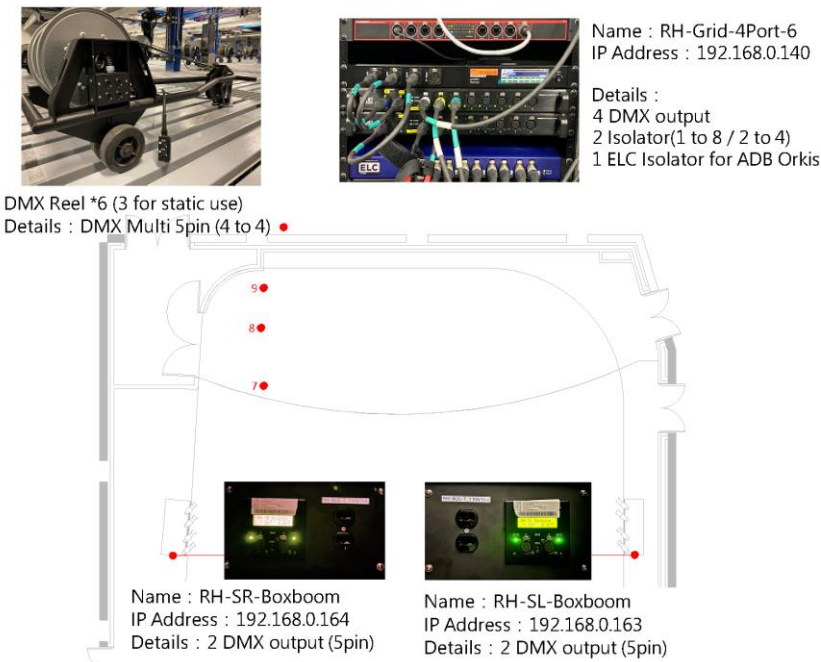


Figure 3.3.1- Grid and Lighting Box Area Node Position Layout

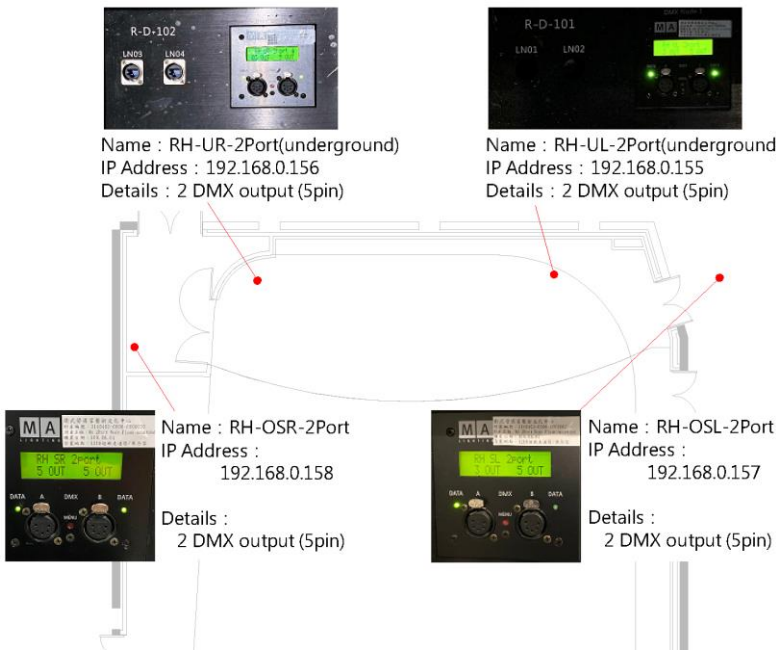


Figure 3.3.2- Stage Area Node Position Layout

3-4 Lighting Circuit

03-4-1 Stage area

Area and Position	Connector	Dimmer Circuit No.	Load	Network Circuit No.
Stage/L	Harting (6 circuits)	001 ~ 006	3kW	LN01~LN02
	CEE 16A (1 outputs/circuit)	007 ~ 008		
Stage/R	Harting (6 circuits)	009 ~ 014	3kW	LN03~LN04
	CEE 16A (1 outputs/circuit)	015 ~ 016		
Up Stage	Harting (8 circuits)	017 ~ 022	3kW	LN05~LN06
Side Stage/L				LN07~LN10
Control Booth				LN11~LN18

Ca =CEE 16A
Cb =CEE 32A
H =Harting(8 Circuits)

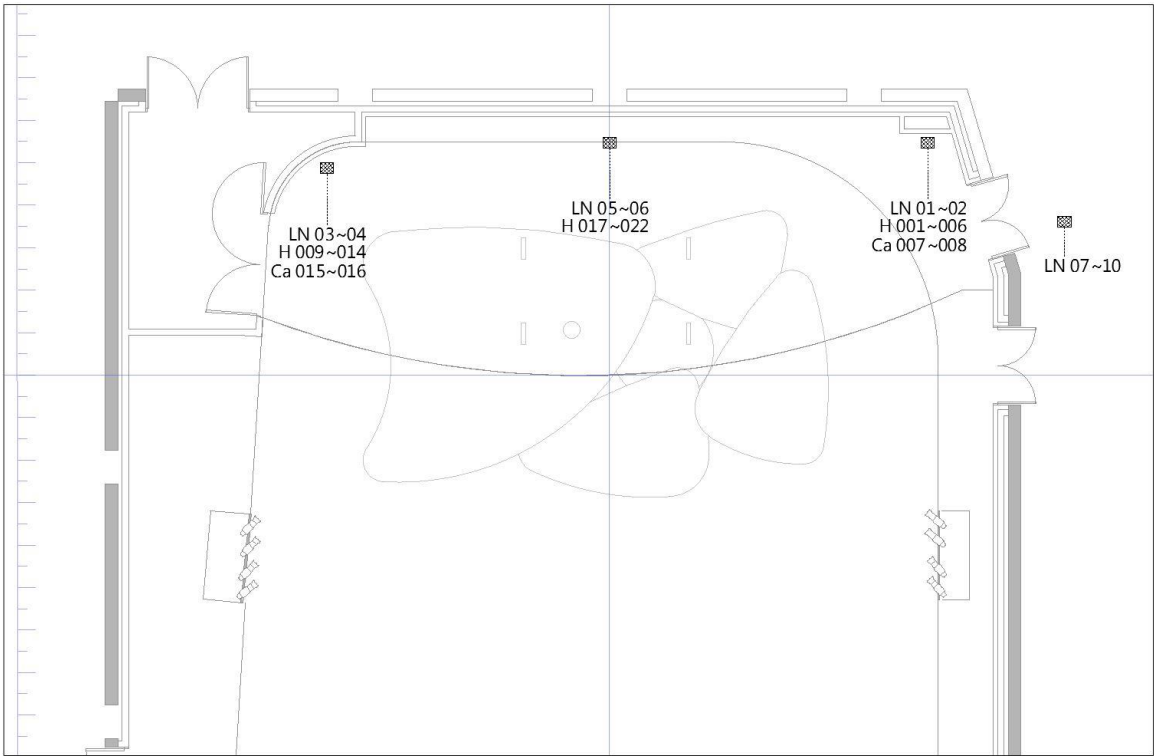


Figure 3.4.1.1- Stage Area Lighting Circuit Layout

3-4-2 Front of House

Area and Position	Connector	Dimmer Circuit No.	Load	Network Circuit No.
Lighting Box/R	CEE 16A (2 outputs/circuit)	025~ 028	3kW	LN19~LN20
		029 ~ 032		
Lighting Box/L	CEE 16A (2 outputs/circuit)	033 ~ 036	3kW	LN21~LN22
		037 ~ 040		
Stage Grid Area	Harting (8 circuits)	041 ~ 048	3kW	LN23~LN24
		049 ~ 056		LN25~LN26
		057 ~ 064		LN27~LN28
		065 ~ 072		LN29~LN30
		073 ~ 080		LN31~LN32
		081 ~ 088		LN33~LN34
		089 ~ 096 (For Stage Top Light)		
Catwalk	CEE 16A (2 outputs/circuit)	097 ~ 100	3kW	LN35~LN36
		101 ~ 104		
		105 ~ 108		
		109 ~ 112		
		113 ~ 116		
		117 ~ 120		

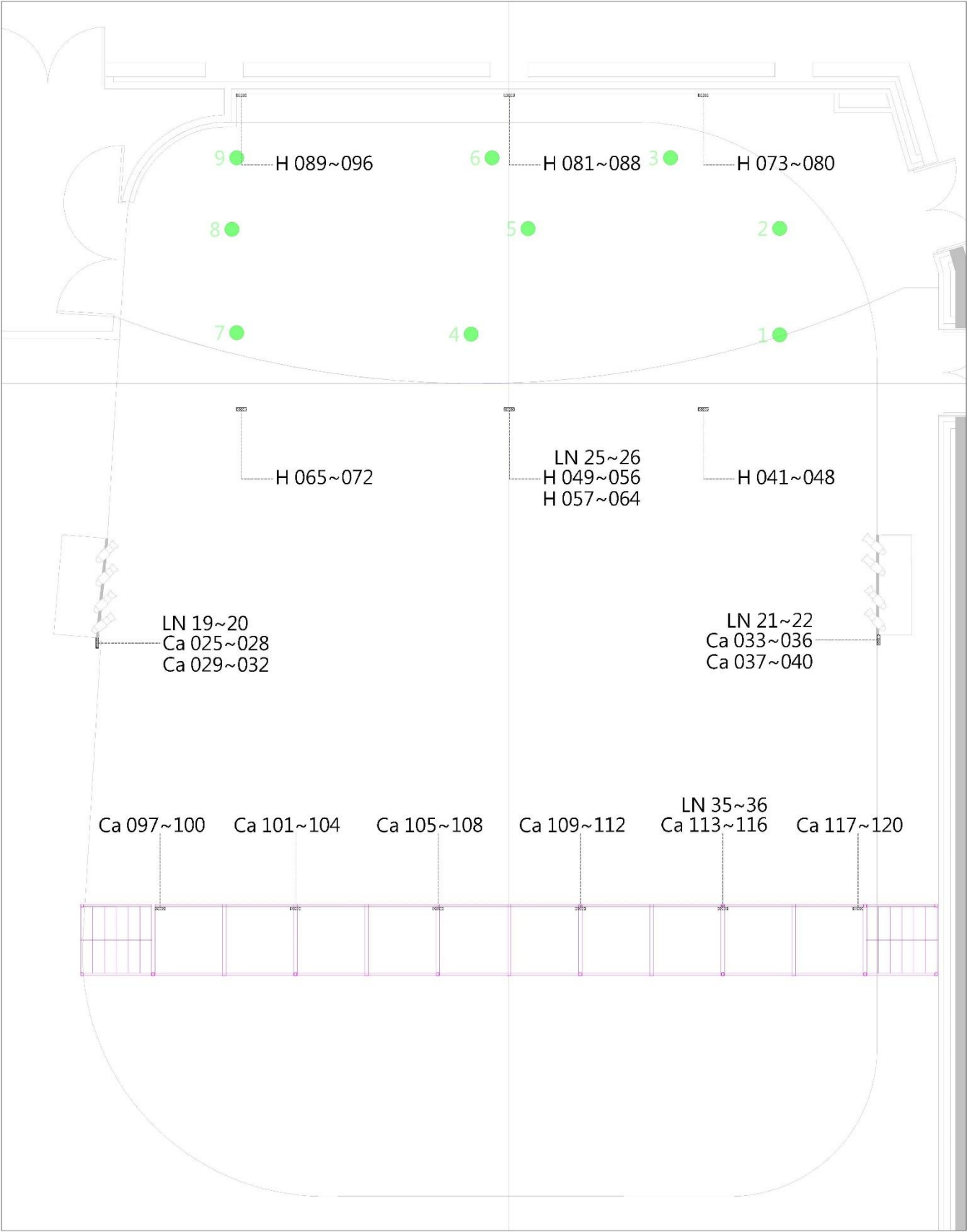


Figure 3.4.2.1- Grid Area-Lighting Circuit Layout

3-5 Portable Lift

Brand and Model: Snorkel UL-25 (AC Power Supply)
Maximum height: 7.6m
Maximum weight: 159kg
Quantity: 1

3-6 Additional Power Supply

Function	Position	Specifications	Quantity
Stage	Up Stage Left / Stage Right Waiting Area	3 ￆ 4W+G 380V/220V/60Hz (CEE 125A/3P+N+E)	1 / 1
Light		3 ￆ 4W+G 208V/120V/60Hz (Camlock 250A)	1 / 1
Sound		3 ￆ 4W+G 208V/120V/60Hz (Camlock 50A)	1 / 1



Figure 3.6- Additional Power Supply

3-7 Working Light / House Light

Working Light

Work lights provided white and blue light mode, and the control switch is located on the stage manager’ s Desk.
Lighting area: Side stage entrance, Lighting Box, Grid area and Cat walk.

House Light

Auditorium lights consists houselights and step lights, which can be separately controlled and dimmed. The control panel is located on the stage manager’ s Desk and lighting control room.

4 Audio/Video Systems

4-1 Audio Facilities

Item	Quantity	Brand and Model	Paid Item
Digital speaker	4	Renkus-Heinz IC 8RⅡ	
12" Active stage monitor speakers	4	Renkus-Heinz PN121M/12	
6.5" Active stage monitor speakers	4	Renkus-Heinz PN61	*
2CH Equalizer	2	XTA GQ600	*
AD/DA, I/O Digital I/O Fiber Module	2	Studer D21M	
Stereo audio converter	1	Whirlwind PcUSB 2-Channel USB Direct Box	
Mixing console	1	Midas M32R LIVE Stage Box : Midas DL16	*
Wireless PA equipment	2	MIPRO MA-708	*
Wireless PA equipment	2	MIPRO MA-808	*
Wireless PA equipment	2	MIPRO MA-828	*
Mixing console Comb	4	Mixer : Yamaha DM3 Standard Handheld Wireless microphone : MIPRO ACT-747 x 1, MIPRO ACT-700H x 4 Speaker : Renkus-Heinz PN 61 x 2 Including assembly and disassembly and execution manpower.	*
Mixing console	1	Midas heritage D HD96-24-CC-TP Stage Box : Midas DL231	*
Signal Splitters	1	Midas DL431	*

Items with * mark are paid items. Please refer to the rate tables of National Kaohsiung Center for the Arts.

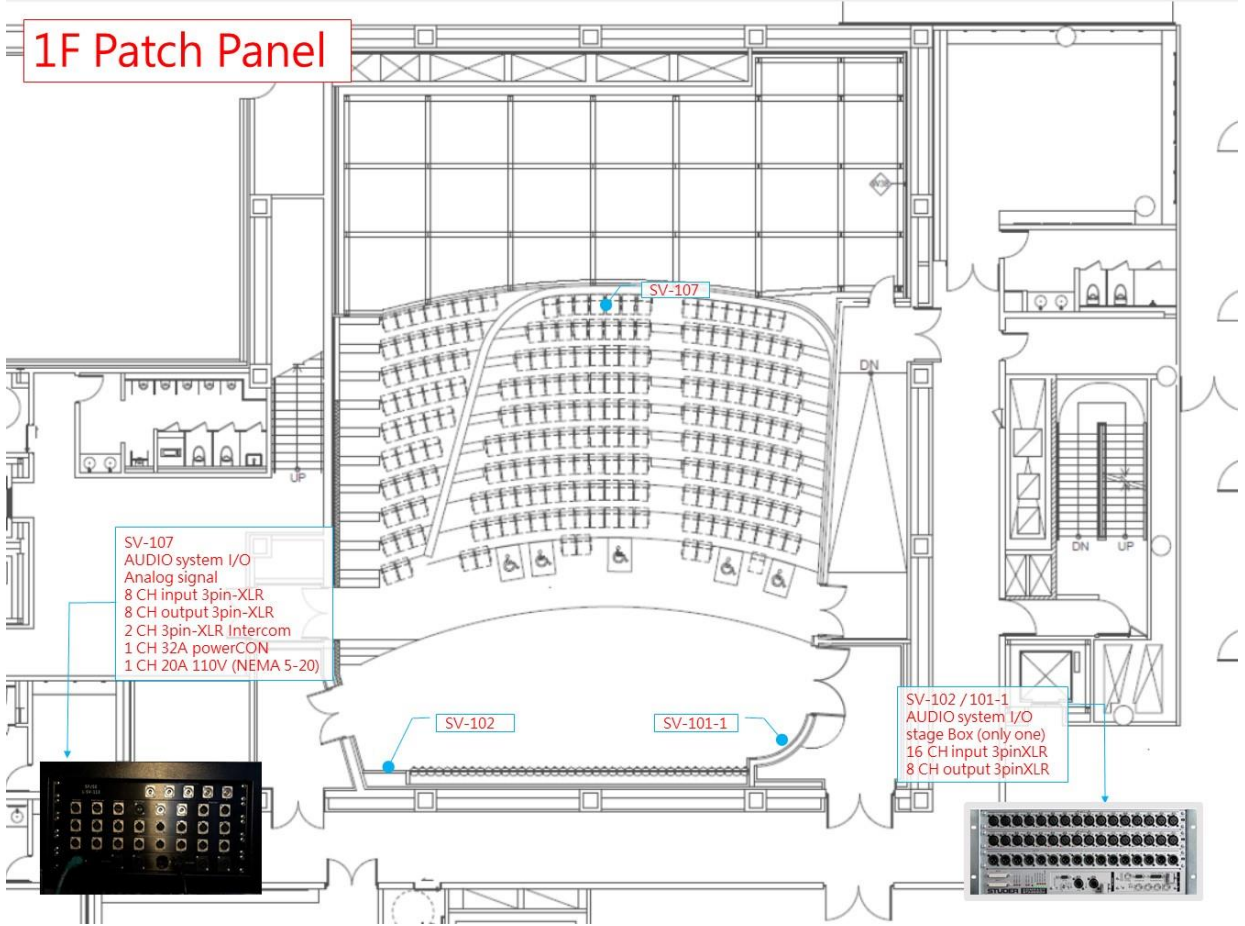


Figure 4-1.1 1F Audio system channel diagram

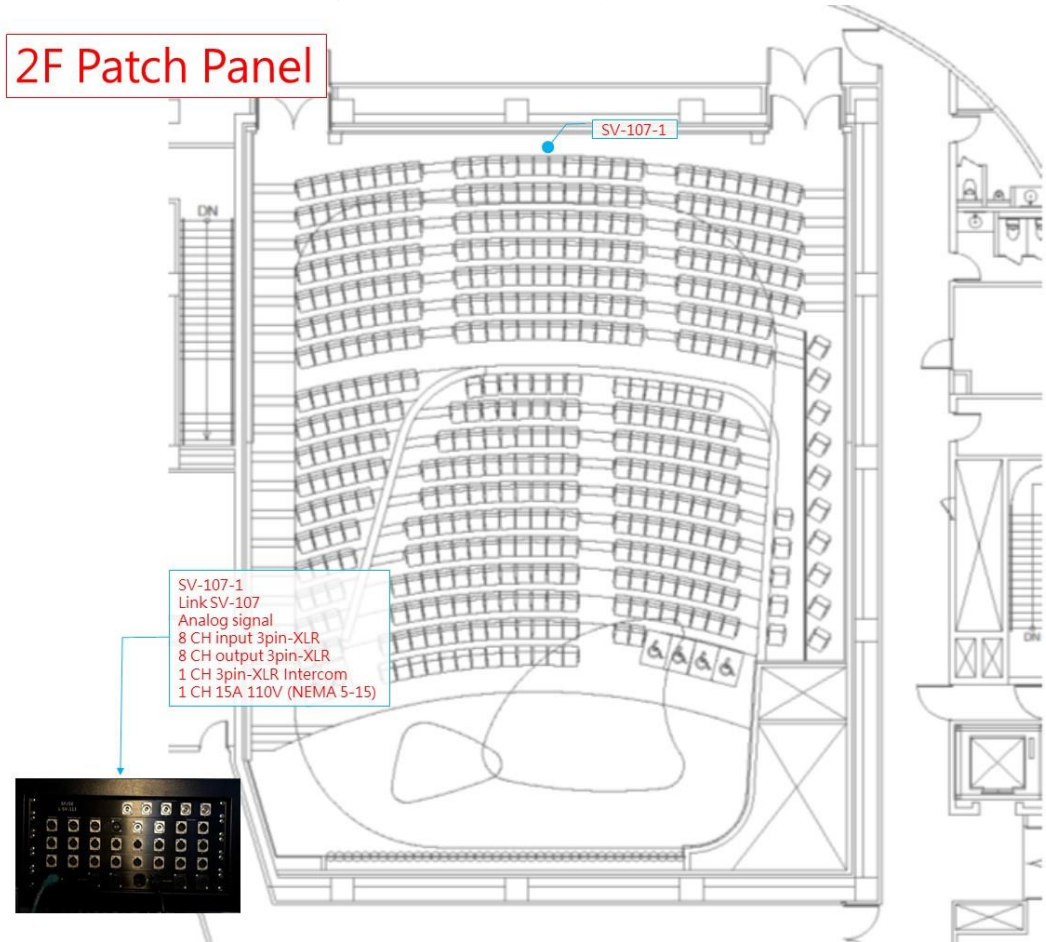


Figure 4-1.2 2F Audio system channel diagram

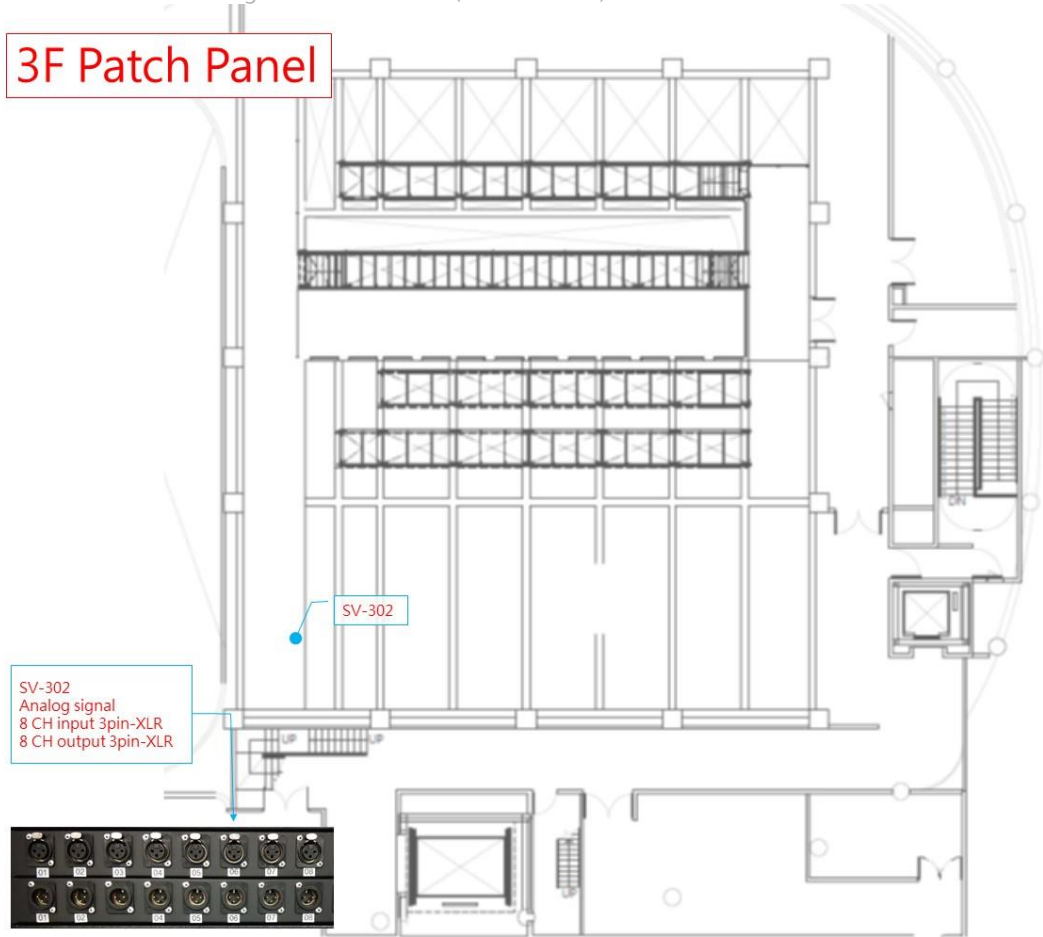


Figure 4-1.3 3F Audio system channel diagram

Optical Fiber : Point-to-Point Channel Diagram

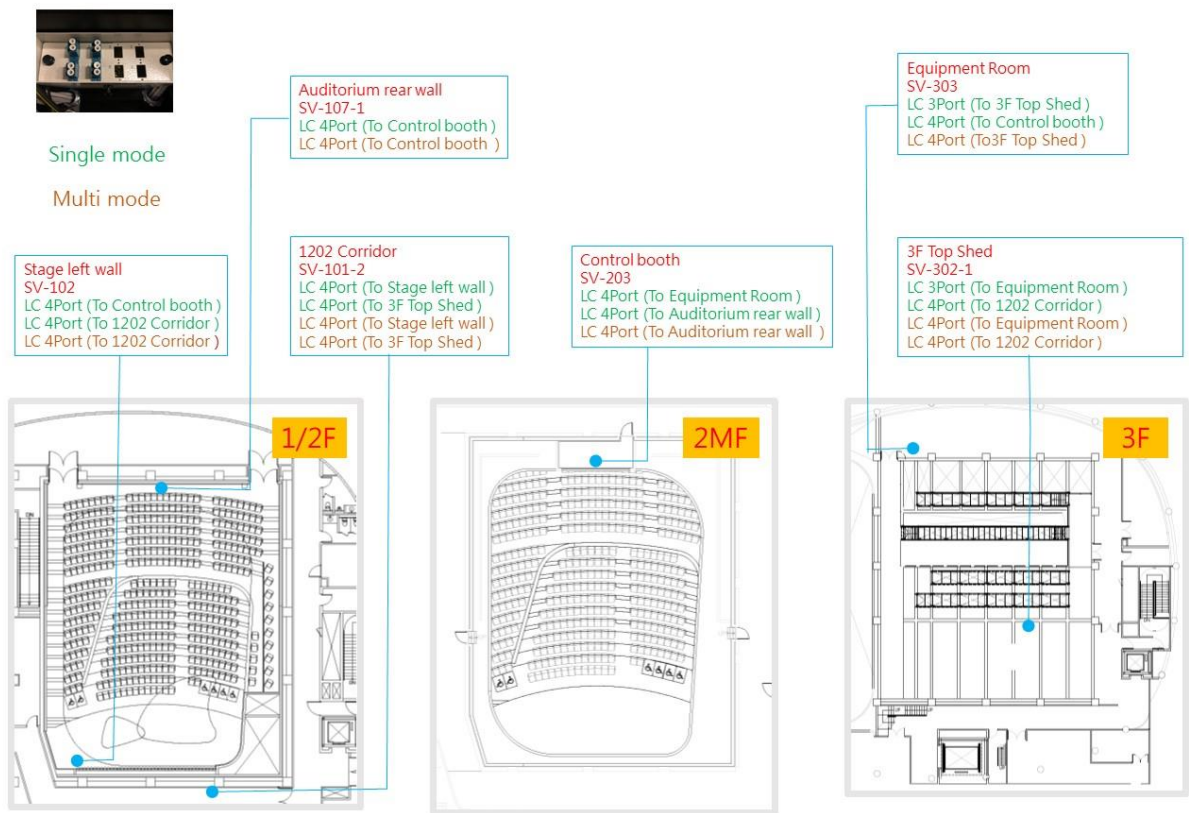


Figure 4-1.5 Optical fiber point-to-point channel diagram

Point-to-Point Channel Diagram

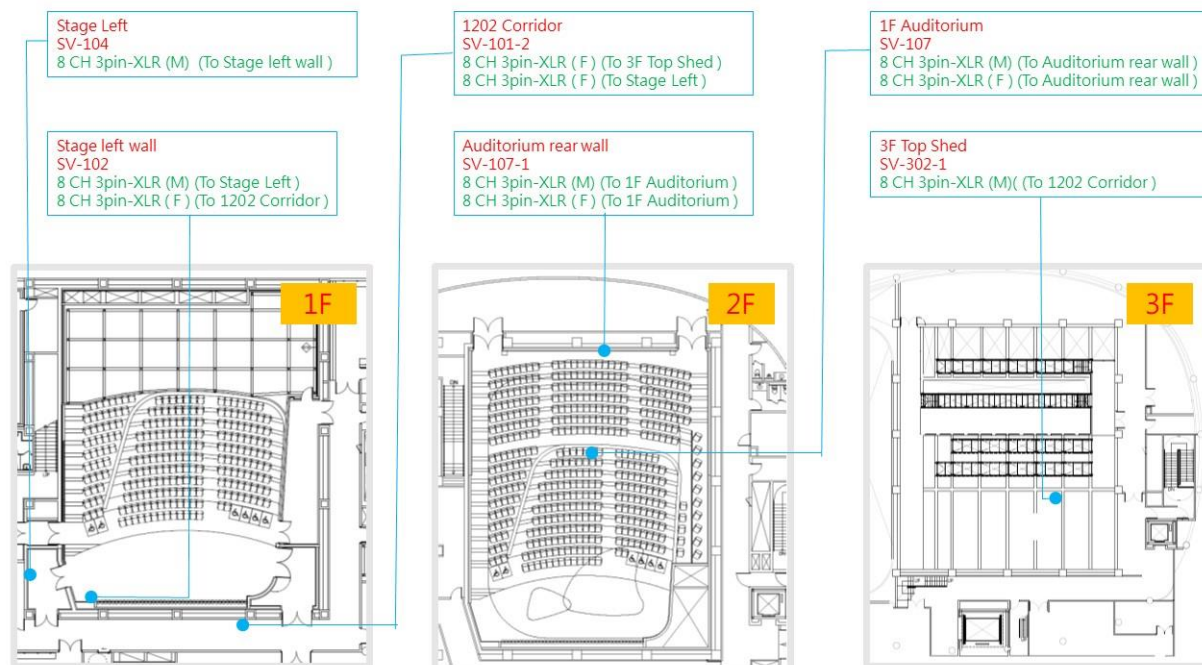


Figure 4-1.5 Signal point-to-point channel diagram

RJ45 : Point-to-Point Channel Diagram

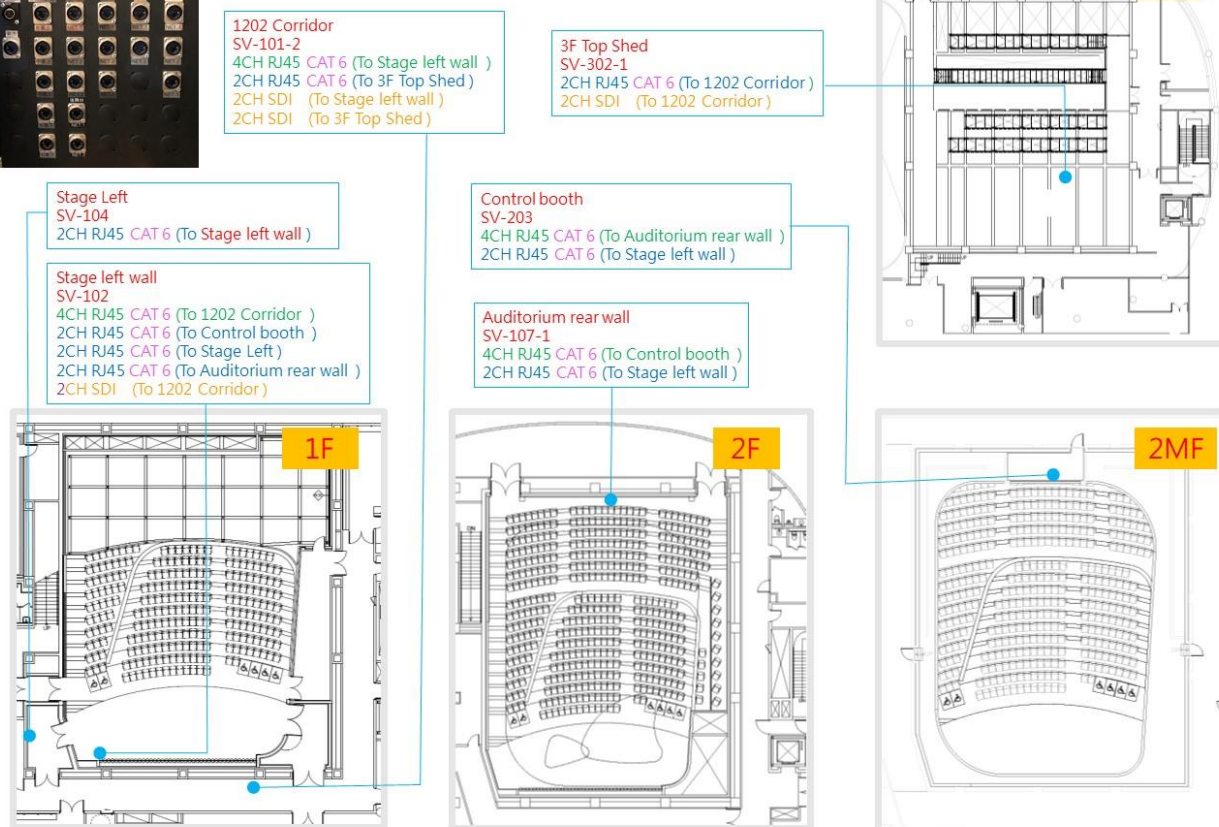


Figure 4-1.6 RJ45 point-to-point channel diagram

4-2 Control Room

Item	Quantity	Brand-and Model	Paid Item
Digital mixer	1	Studer Vista 5 M3/32	
Digital I/O Fiber Module	1	Studer D21m	
CD player	1	Tascam CD-500B	*
CD-R recorder / player	1	Tascam CD-RW 901 MKII	*
Multi-circuit recording equipment	1	Joeco BBR1D+2.5" USB 1TB HD	*
Dual track Hard disk recorder	1	Tascam DA 3000	*
Active monitor speakers	2	Dynaudio BM12 MkIII	

Items with * mark are paid items. Please refer to the rate tables of National Kaohsiung Center for the Arts.

4-3 Stage Manager's Desk

The stage manager desk equips with a live sound monitor, video monitors, synchronous show screens with lighting and fly, communication system and paging system.

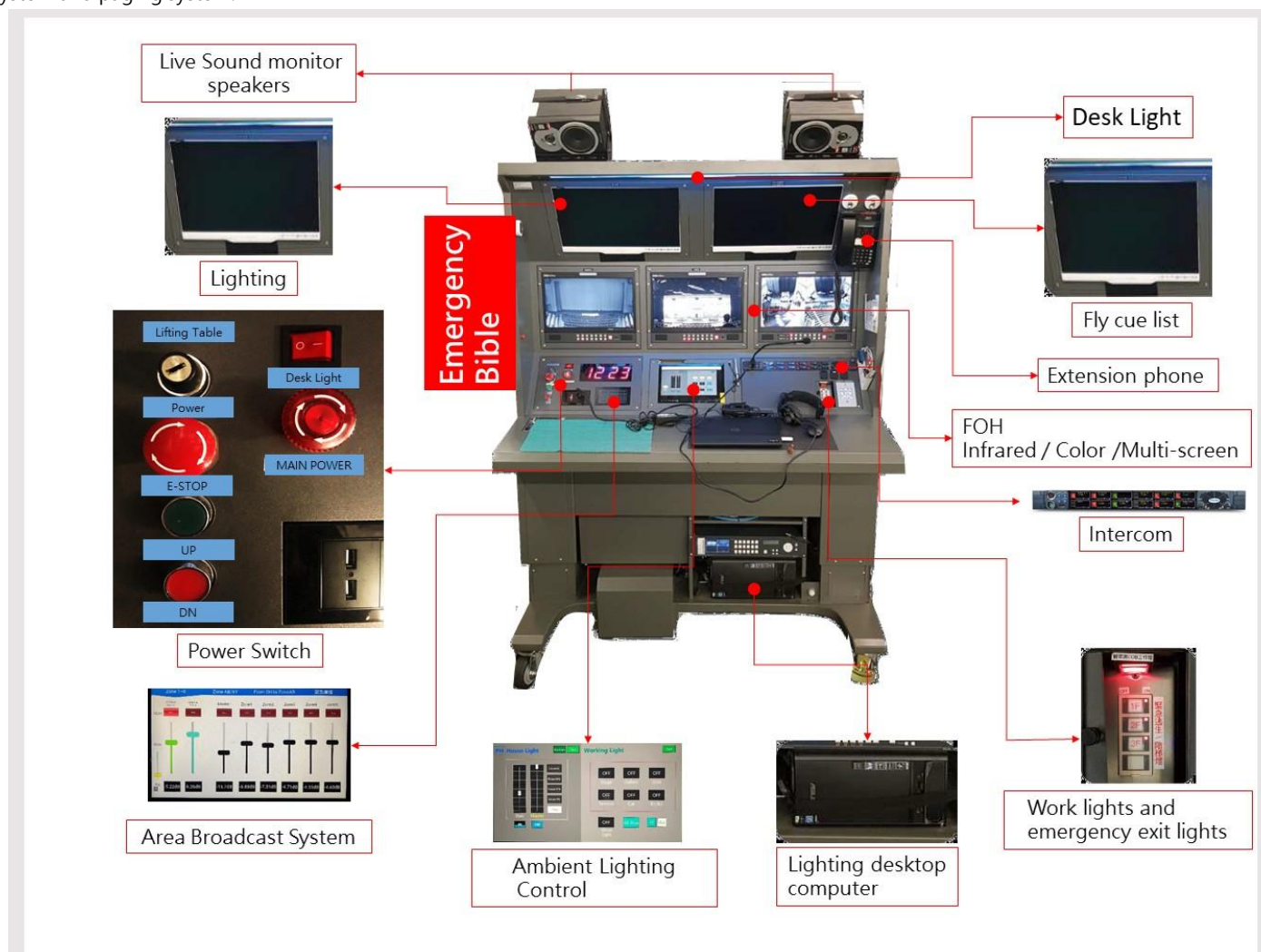


Figure 4-3.1 Stage Manager Desk

4-4 Microphone

Item	Quantity	Brand and Model	Paid Item
Dynamic microphone Audio Technica AE4100	2	Audio Technica AE4100	*
Dynamic microphone Audio Technica ATM250	4	Audio Technica ATM250	*
Condenser microphone	2	Audio Technica AE5400	*
Cardioid Condenser microphone	4	Audio Technica AT4021	*
Cardioid Condenser Boundary Microphone	2	Audio Technica U851R	*
Stage reception Microphone	2	DPA 4017B / DPA UA0836 Holder	
Hypercardioid Condenser microphone	4	AKG CK-63-ULS+C480B	*
Cardioid condenser microphone	4	AKG CK-61-ULS+C480B	*
Wireless microphone	2	Sennheiser SKM500G3+MME865	*
Lavalier wireless microphone	6	Sennheiser SK500G3+MKE2	*
Single channel wireless microphone receiver	8	Sennheiser EW500G3	
Directional Antenna	2	Sennheiser AD3700	
Wave antenna distributor	3	Sennheiser ASA1	
Condenser microphone Neumann U87 Ai Studio Set	1	Neumann U87 Ai Studio Set Accessories : EA 87 / WS 87	*
Condenser microphone Neumann KM184	8	Neumann KM184 Accessories : SG 21 bk / WNS 100	*
Condenser microphone DPA 2011C/MMP-C	4	DPA 2011C/MMP-C	*
Condenser microphone DPA 4099-DC-1(For Loud SPL)/DAD6001-BC	8	DPA 4099-DC-1(For Loud SPL)/DAD6001-BC Accessories : 1.DoubleBass(BC4099) x 2 2.Cello(CC4099) x 2 3.Piano(PC4099) x 2 4.Clamp(CM4099) x 2 5.Guitar(GC4099) x 4 6.Sax and Trumpet(STC4099) x 2 7.MIC Stand(MS4099) x 1 8.Microphone Clip(UC4099) x 2 9.Violin and Mandolin(VC4099) x 8	*

Items with * mark are paid items. Please refer to the rate tables of National Kaohsiung Center for the Arts.

4-5 Communications

Item	Quantity	Brand and Model	Paid Item
Intercom host machine	1	Clear-Com Eclipse HX-Delta	
System interface	1	Clear-Com Helixnet HMS-4	
Double circuit intercom	3	Clear-Com Helixnet HBP-2X	
Fixed intercom microphone/ speak	1	Clear-Com V12PDXY 110/340 Clear-Com V12PDDXY 110 / 340	
Single head receiver microphone	3	Clear-Com CC-300	
Double head receiver microphone	2	Clear-Com CC-400	
Telephone intercom	2	Clear-Com HS-6	
Digital Wireless Intercom set	2	1. Portable wireless sub-station / Clear-Com FS-BP 2. Single-ear headset / Clear-Com CC-300	*

Items with * mark are paid items. Please refer to the rate tables of National Kaohsiung Center for the Arts.

4-6 Locations of Communications

Item Number	Floor	Location
1	1F	stage right entrance
2		stage right entrance
3		FOH Auditorium chair below (Row1-3,11)
4		Loading Dock
5		Recording studio
6		Personal makeup room 1
7		Personal makeup room 2
8	2F	Control room
9		Control room
10	3F	Catwalk

4-7 Stage Cameras and Video Surveillance Systems

Stage monitors are installed in right and left wing stage entrance, first, second, and third floor lobby, master and secondary control room, dressing rooms and green rooms.

Item	Quantity	Brand-and Model	Paid Item
Camera(2/3 inch 3CCD)	1	Panasonic AW-HE870 Panasonic LZ20M85G	
Remote control	1	Panasonic AW-RP50	
Switcher	1	Panasonic AW-RP120	
Video recording	Show	Fixed camera for stage panoramic view recording, only suitable for archived copy.	

Items with * mark are paid items. Please refer to the rate tables of National Kaohsiung Center for the Arts.

4-8 Paging Systems

Backstage Paging Systems available for all dressing rooms, green rooms, Company office and Corridors, see next page.
The Paging and Program position is located on the Stage Manager Desk.

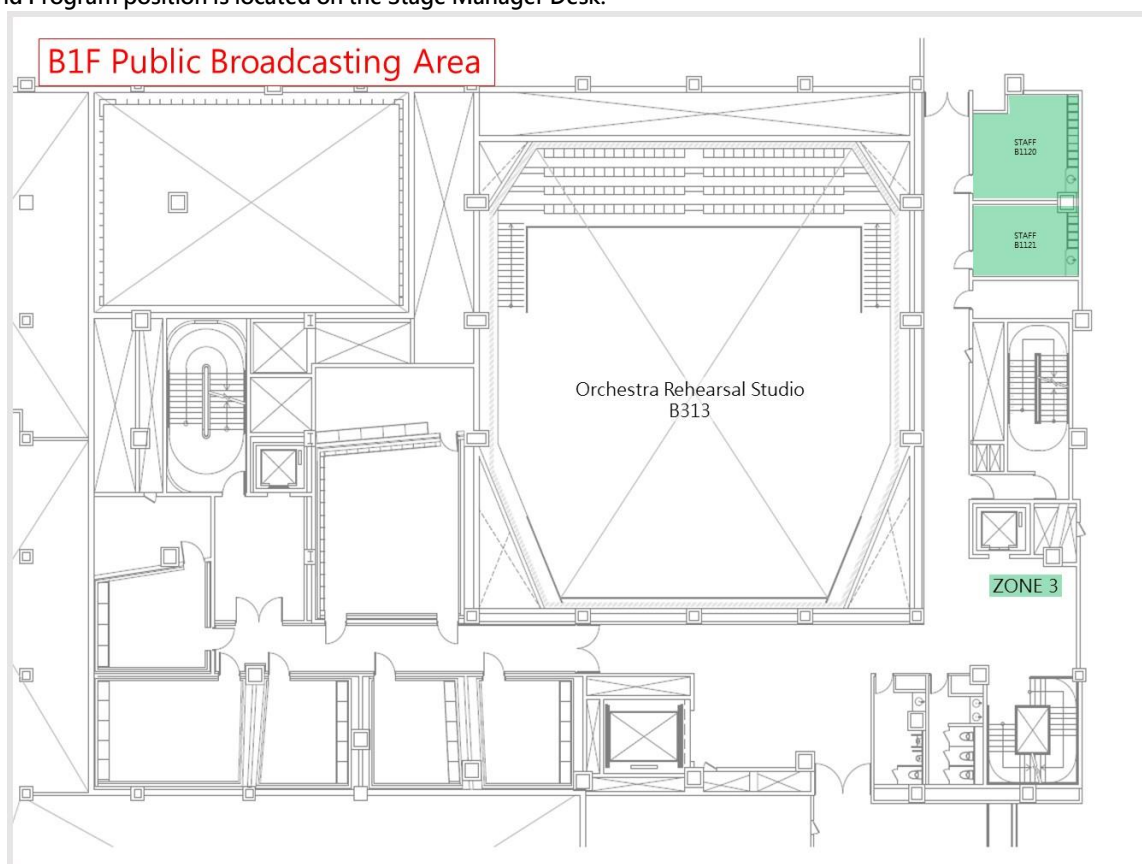


Figure 4-8.1 B1F public broadcasting area

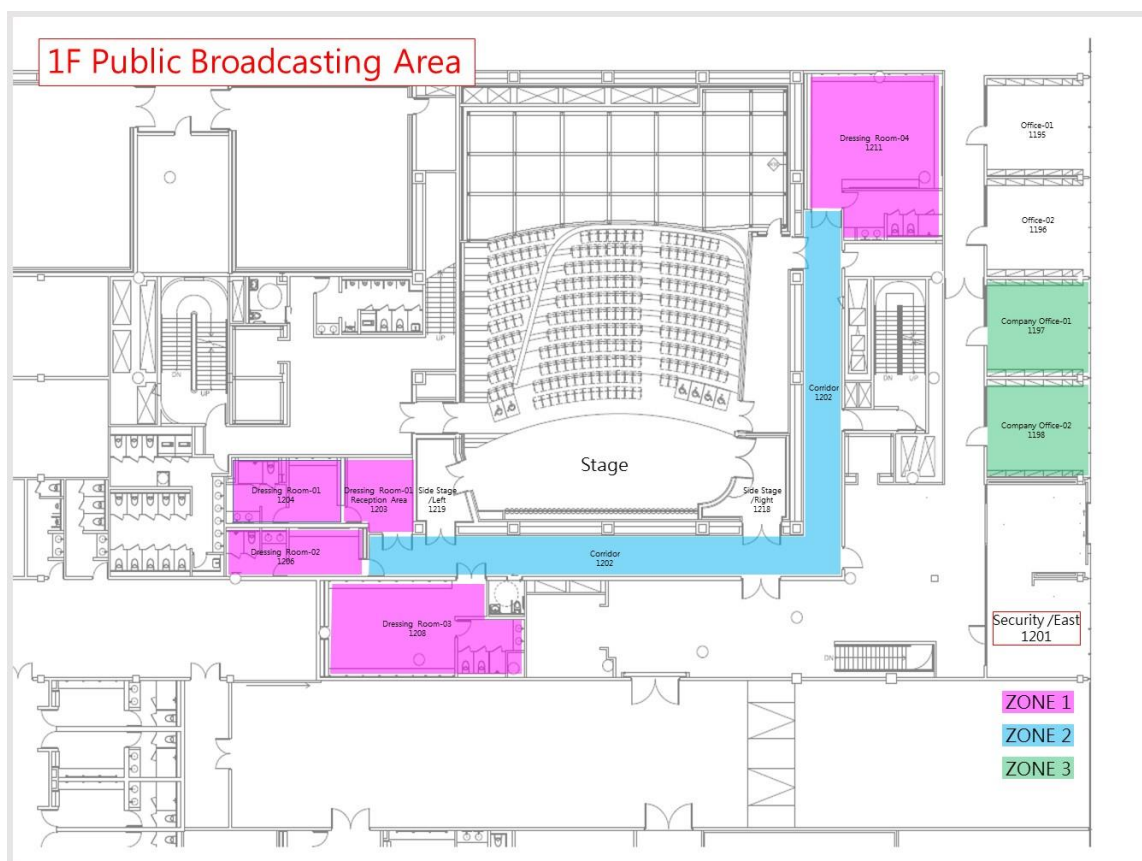


Figure 4-8.2 1F public broadcasting area

4-9 Projector

Name of Item	Quantity	Brand and Model	Note
5K Lumens LCD Projector	2	NEC PE501X	* Option 2
5K Lumens Laser Projector	2	Optoma ZU500USTe Projection distance (45.7cm132 inches - 58.3cm155 inches)	* Option 2
6K Lumens Laser Projector	2	Panasonic PT-VMZ60T · Wide-angle lens(Zoom) Lens : throw ratio 1.09 -1.77 : 1	* Option 2
10K Lumens Laser Projector	1	Panasonic PT-RCQ10 · Normal lens (Zoom) Lens : throw ratio 1.71~2.41 : 1	* Option 2
Dedicated Ultra Short Focus Lens	1	ET-DLE020 · Lens : throw ratio 0.28~0.299 : 1 (For Panasonic PT-RCQ10)	* Option 2
30K Lumens Laser Projector	2	Panasonic PT-RQ35K with optional lens ET-D3LEW60 (throw ratio : 0.991-1.18:1) ET-D3LEW10 (throw ratio : 1.35-1.84:1) ET-D3LES20 (throw ratio : 1.79-2.59:1)	* Option 2 · 3
17.3" Full HD LCD Monitor	2	Datavideo TLM-170L	* Option 1
Projection screen	4	Grandview X-Press Pull-UP 100-inch projection	* Option 1

Items with * mark are paid items. Please refer to the rate tables of National Kaohsiung Center for the Arts.

Option 1 : Setup and operating is not included !

Option 2 : Operating is not included !

Option 3 : Rental fee 50% off from second show.

5 Backstage Facilities

5-1 Dressing Rooms and Green Rooms

All dressing rooms and green rooms are on the first floor.

No.	Room No.	Name	Capacity	Notes
1	1204	Dressing Room 01	2	Includes mirror, table and chairs, toilet and shower
2	1206	Dressing Room 02	3	Includes mirror, table and chairs, toilet and shower
2	1208	Dressing Room 03	13	Includes upright piano, mirror, table and chairs, toilet and shower
4	1211	Dressing Room 04	13	Includes mirror, table and chairs, toilet and shower

5-2 Orchestra Facilities

No.	Item	Quantity	Notes
1	Chair	150 *	
2	Ensemble stool	18 *	Rotate : 6 Unable to rotate : 12
3	Conductor' s chair	1 *	
4	Music stand	140 *	
5	Music stand Tray	10 *	
6	Music stand light	60 *	White light, two brightness mode
7	Conductor' s podium	1 *	WENGER Double podium / Base podium:1.09 x 0.97 x 0.15 m Double podium / Upper podium:0.81 x 0.97 x 0.15 m Single podium :1.2 x 1.15 x 0.25 m
8	Conductor' s stand	1 *	
9	Percussion table stand	8 *	
10	Endpin stopper	20 *	
11	Platform	30 *	Large L183cm*W138cm*H22cm*10 Medium L183cm*W92cm*H22cm*10 Small L183cm*W46cm*H22cm*10
12	Acoustic shield	5 *	
13	Resonance Podium for Violin 100*60*15(cm)	8 *	
	Resonance Podium for Violin 100*60*20(cm)	8 *	
	Resonance Podium for Cello 130*60*15(cm)	4 *	
	Resonance Podium for Cello 130*60*20(cm)	4 *	
	Solo Musician' s Podium 175*100*20(cm)	1 *	
	Solo Musician' s Podium 115*110*15(cm)	1 *	

Items with * mark are shared with Concert Hall.

5-3 Pianos (shared between four venues)

No.	Item	Brand	Model Number	Quantity	Notes
1	Model-D Concert grand	Steinway & Sons	D-274	3	*
2	Concert grand	FAZIOLI	F308	1	*
3	Grand Piano	YAMAHA	C7XPE	1	*
4	Grand Piano	KAWAI	SK-6L	1	*
5	Celesta	Schiendmayer	5 ½ Octave Studio model	1	*
6	Harpsichord	J.C.NEUPERT	Hemsch	1	*
7	Upright Piano	YAMAHA	U3	1	*
8	Organ	ORGELBAU	Johannes KLAIS	1	*

Items with * mark are paid items. Please refer to the rate tables of National Kaohsiung Center for the Arts.

Important :

1. Pianos shared with four venues, booking in advance is required.
2. WeiWuYing's contract-signed piano technician must tune all pianos before performance.(Piano hire fees do not include tuning costs)
3. Extra material (any object touching the strings during the performance, including hands or palms) pianos are limited to YAMAHA C7XPE and KAWAI SK-6L, which should be restored and tuned by the venue's contracted tuner at the end of the performance (at the latest on the next day) at the expense of the applicant.
4. While WWY' s piano is in part of the performance, the Fog and Haze Machine can' t be used.

5-4 Loading Dock

5-4-1 East Dock

Recital Hall and Concert Hall use the East Dock for loading and unloading. The dock is equipped with two hydraulic dock leveler that can be adjusted according to the required height.

Dock Dimension

- Dimension : 8.75m (width)
- Clearance : 4.3m height from floor to top
- 3.8m height from dock to grid area (Truck height limit 4.2m)
- Height from dock to floor: 0.98m
- Stage entrance: minimum 1.95m (width) x 2.2m (height)

※Notes for Container Transport:

Due to the limitation of the slope at the entry of the loading dock, the minimum height of the trailer’ s low bed should be higher than 100cm. Also, if the company hires a 40’ high-cube container, the bed rack should be within the height of 135~140cm to accommodate the height of loading gate.

5-4-2 Handling equipment

- 3mt Manual Hydraulic Pallet Jack x1
- 1.5mt Stand-Up Automatic Electric Forklift x1
- * Forklift drivers are required to pass the forklift certification test and obtain a technician’s license. If you need to use the forklift, please contact us as soon as possible.
- * Aerial work trucks are always stationed at the East Pier Lane, please make an early request if you need to move your vehicle.

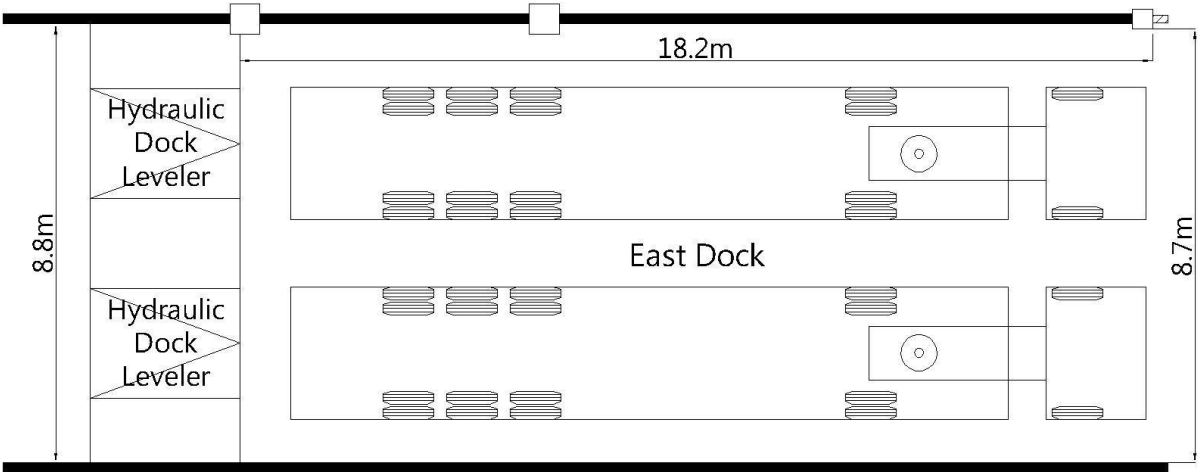


Figure 5.1- East Loading Dock Plan

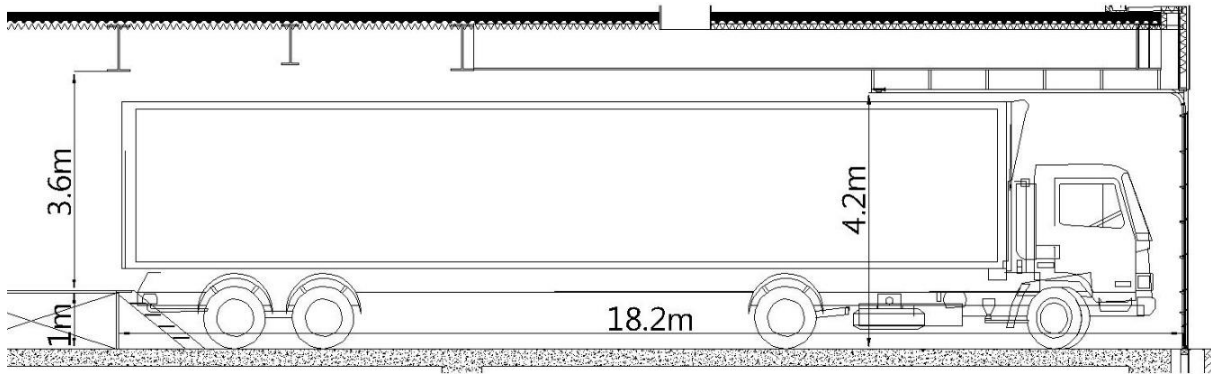
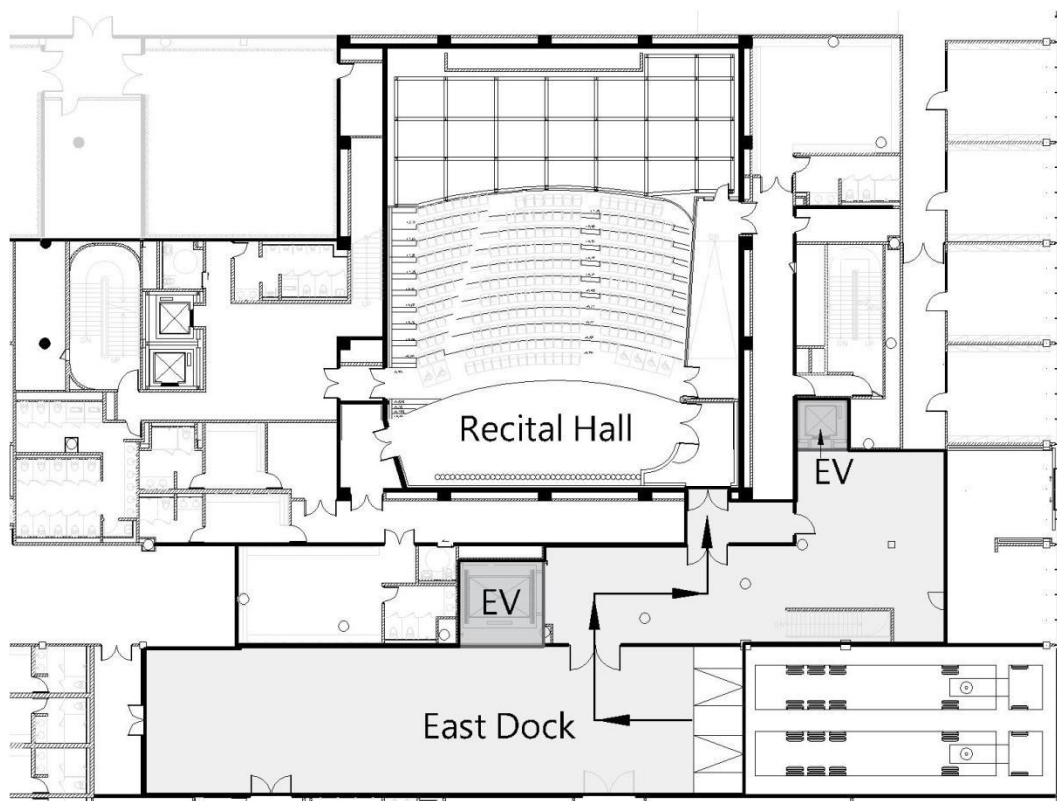


Figure 5.2- East Loading Dock Section

5-4-3 Loading Flow

*Figure 5.3 - Loading Flow*

5-4-4 Hydraulic Dock Leveler

Capacity: 22.6mt

Area: 198cm (width) x 221.9cm (length)

Elevation: +/- 30.5cm

Quantity: 2 on east dock

5-5 Other Facilities

5-5-1 Rehearsal Rooms

There is no rehearsal studio dedicated to the Playhouse. Additional rehearsal space is limited across the WeiWuYing. There are 13 different function and accommodated rehearsal studios, these available for hire between four major theatres. Requests should be discussed well in advance to determine availability. The hire fees please refer to the rate tables of National Kaohsiung Center for the Arts.

Room No.	Name	Dimension (Length x Width x Height / m)	Notes
1182	Medium Rehearsal Studio-02	11.4x10.8x3.8	1. Wooden floor covered gray color dance floor , Sound absorption wall x 2 side ,Wall mount glassless mirrors x 2 side 2. Capacity : 50
1184	Medium Rehearsal Studio-03	11.1x10.8x4	1. Grand Piano ,Wooden floor covered gray color dance floor , Sound absorption wall x 2 side ,Wall mount glassless mirrors x 2 side 2. Capacity : 50
1186	Large Rehearsal Studio-04	17.5x12.1x3.9	1. Grand Piano ,Wooden floor ,black color dance floor , Wall mount glassless mirrors x 2 side ,Fixed Ballet barre on the single sided wall mirror x 2 2. Capacity : 110
		Subsidiary space 6.6×8.8 ×3	Rehearsal Studio-04 use only Green Room-01(With dressing room)
1192	Large Rehearsal Studio-05	19.3x12.2x3.9	1. Grand Piano ,Wooden floor , black color dance floor , Wall mount glassless mirrors x 2 side ,Fixed Ballet barre on the single sided wall mirror x 2 2. Capacity : 110
		Subsidiary space 6.6×8.8 ×3	Rehearsal Studio-05 use only Green Room-02(With dressing room)
B1111	Small Rehearsal Studio-06	8x7.4x2.3	1. Upright piano ,Chair , Music stand ,Wooden floor , Sound absorption wall 2. Capacity : 25
B1112	Small Rehearsal Studio-07	5.2x4.4x2.3	1 Chair , Music stand ,Wooden floor ,Sound absorption wall 2 Capacity : 10
B1113	Small Rehearsal Studio-08	7.2x5x2.7	1. Chair , Music stand ,Wooden floor ,Sound absorption wall 2. Capacity : 15
B1114	Small Rehearsal Studio-09	5.2x3.7x2.7	1. Chair , Music stand ,Wooden floor ,Sound absorption wall 2. Capacity : 10
B1115	Small Rehearsal Studio-10	5.2x4.1x2.7	1. Chair , Music stand ,Wooden floor , Sound absorption wall 2. Capacity : 10
B1116	Small Rehearsal Studio-11	5.2 x 4.1 x2.7	1. Chair , Music stand , Wooden floor , Sound absorption wall 2. Capacity : 10
B304	Chorus Rehearsal Room	15.9x9.9x8.8	1. Grand Piano ,Chair , Ensemble stool ,Wooden floor , Sound absorption curtain 2. Capacity : 80
B313	Orchestra Studio	18.7x14.3x7.8	1. fixed auditorium< 84seats> ,Grand Piano, Chair, Ensemble stool , Wooden floor, Sound absorption curtain 2. Capacity : 200

5-5-2 Carpentry Shop / Costume Shop / Laundry Room

National Kaohsiung Center for the Arts is equipped with basic production facilities, include Carpentry Shop, Costume Shop, and laundry rooms. Those for hire between four major theatres. The hire fees please refer to the rate tables of National Kaohsiung Center for the Arts.

Room No.	Name	Dimension (Length x Width x Height / m)	Notes
1002	Carpentry Shop	11.9×19.7×3	Basic wood crafts and electrical tools
1165	Costume Shop-01	5.9×10.2×3	Basic facilities for the maintenance of costume; Sewing machine, overlock machine and steam / iron equipment
1181	Costume Shop-02	5.8×11.8×3	
B1022	Costume Shop-03	5.4×3.7×2.5	
1163	Laundry Room-01	5.8×4.9×3	Washing machine, tumble dryers, sink and clothes folding table
B1019	Laundry Room-02	6×8.2×3	